

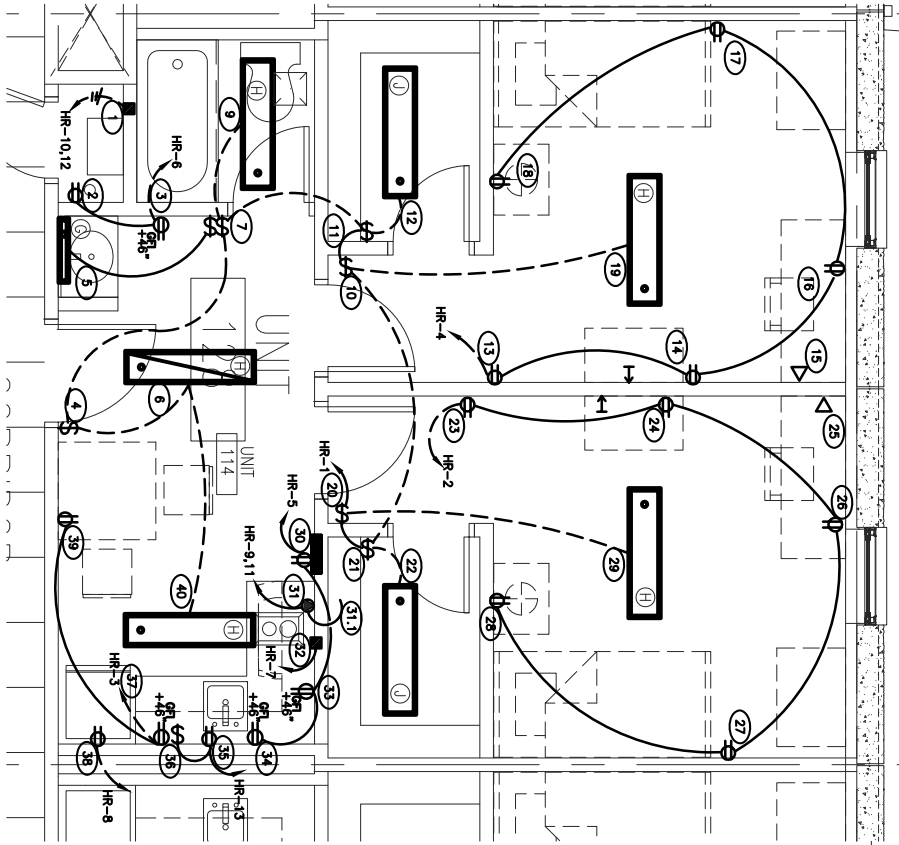
DRAWING NOTES
 1. REFER TO THE OVERALL CUT SHEET FILE FOR INDIVIDUAL ROOM NUMBER MUD RING TYPES.

WIRING LEGEND

ROUTE WIRE THRU WALL
 ROUTE WIRE OVERHEAD
 WIRE BY OTHERS

BUILDING - 6XX ROOM NUMBERS:

- 100 200 300
- 101 201 301
- 102 202 302
- 105 205 305
- 106 206 306
- 110 210 310
- 113 213 313
- 114 214 314
- 124 218 318
- 128 221 321
- 131 222 322
- 132 225 325
- 135 226 326
- 229 329



1 TYPICAL BARRACKS UNIT
 SCALE: 1/4"=1'-0"

Room	Tag	Device	Color	Bracket	Mounting	Ring	Position	Length	Wire Type	Cable Type	Quantity	Remarks	Gangway	Box	Remarks	Device	Remarks
1	2	D20120	W	SB1	S2	V	8	122	MC	MC	1	HR-1012					
2	3	G20120	W	SB2	S2	V	34	122	MC	MC	1	HR-6					
3	4	SV20120	W	SB2	S2	V	15	122	MC	MC	1	B-B-WWH					
4	7	SV20120	W	SB2	D2	V	21	122	MC	MC	1	B-B-WWH					
5	10	SV20120	W	SB2	S2	V	24	122	MC	MC	1	B-B-WWH					
6	11	SV20120	W	SB2	S2	V	5	122	MC	MC	1	B-B-WWH					
7	12	D20120	W	SB1	S2	V	15	122	MC	MC	1	HR-4					
8	13	D20120	W	SB1	S2	V	31	122	MC	MC	1	HR-4					
9	14	D20120	W	SB1	S2	V	12	122	MC	MC	1	HR-4					
10	17	D20120	W	SB1	S2	V	16	122	MC	MC	1	HR-3					
11	18	D20120	W	SB1	S2	V	18	122	MC	MC	1	HR-3					
12	19	D20120	W	SB1	S2	V	18	122	MC	MC	1	HR-3					
13	20	SV20120	W	SB2	S2	V	14	122	MC	MC	1	HR-1 B-B-WWH					
14	21	SV20120	W	SB2	S2	V	5	122	MC	MC	1	B-B-WWH					
15	22	D20120	W	SB1	S2	V	30	122	MC	MC	1	HR-2					
16	23	D20120	W	SB1	S2	V	11	122	MC	MC	1	HR-2					
17	24	D20120	W	SB1	S2	V	14	122	MC	MC	1	HR-2					
18	26	D20120	W	SB1	S2	V	14	122	MC	MC	1	HR-1 B-B-WWH					
19	26	D20120	W	SB1	S2	V	16	122	MC	MC	1	B-B-WWH					
20	26	D20120	W	SB1	S2	V	18	122	MC	MC	1	B-B-WWH					
21	26	D20120	W	SB1	S2	V	18	122	MC	MC	1	B-B-WWH					
22	26	D20120	W	SB1	S2	V	18	122	MC	MC	1	B-B-WWH					
23	26	D20120	W	SB1	S2	V	18	122	MC	MC	1	B-B-WWH					
24	26	D20120	W	SB1	S2	V	18	122	MC	MC	1	B-B-WWH					
25	26	D20120	W	SB1	S2	V	18	122	MC	MC	1	B-B-WWH					
26	26	D20120	W	SB1	S2	V	18	122	MC	MC	1	B-B-WWH					
27	26	D20120	W	SB1	S2	V	18	122	MC	MC	1	B-B-WWH					
28	26	D20120	W	SB1	S2	V	18	122	MC	MC	1	B-B-WWH					
29	26	D20120	W	SB1	S2	V	18	122	MC	MC	1	B-B-WWH					
30	26	D20120	W	SB1	S2	V	18	122	MC	MC	1	B-B-WWH					
31	26	D20120	W	SB1	S2	V	18	122	MC	MC	1	B-B-WWH					
32	26	D20120	W	SB1	S2	V	18	122	MC	MC	1	B-B-WWH					
33	26	D20120	W	SB1	S2	V	18	122	MC	MC	1	B-B-WWH					
34	26	D20120	W	SB1	S2	V	18	122	MC	MC	1	B-B-WWH					
35	26	D20120	W	SB1	S2	V	18	122	MC	MC	1	B-B-WWH					
36	26	D20120	W	SB1	S2	V	18	122	MC	MC	1	B-B-WWH					
37	26	D20120	W	SB1	S2	V	18	122	MC	MC	1	B-B-WWH					
38	26	D20120	W	SB1	S2	V	18	122	MC	MC	1	B-B-WWH					
39	26	D20120	W	SB1	S2	V	18	122	MC	MC	1	B-B-WWH					
40	26	D20120	W	SB1	S2	V	18	122	MC	MC	1	B-B-WWH					

PANEL LC-XXX: TYPICAL OF 390, 78 PER BLDG

PAVE TYPE: 00 LOAD CENTER
DESCRIPTION: 125 AMP, 16 POLE
MAIN LINES ONLY
RECESS MOUNTING

LOAD	DESCRIPTION	AMP	PH	SIZE	P	LOAD	DESCRIPTION	AMP	PH	SIZE	P	LOAD	DESCRIPTION	AMP	PH	SIZE	P	LOAD	
1	40	LIGHTS & FB	1	20	A	2	RCFT - BEDROOM (AFC)	1	20	A	2	400	A	1	20	A	2	400	A
2	3	BOO	1	20	B	20	RCFT - BEDROOM (AFC)	1	20	B	20	400	A	1	20	B	20	400	A
3	5	BOO	1	20	C	20	RCFT - VANITY, FUJ	1	20	C	20	360	B	1	20	C	20	360	B
4	7	460	1	20	A	20	1	20	A	20	1	1000	D	1	20	A	20	1000	D
5	1	COOKTOP	2	20	B	20	2	20	B	20	2	1000	D	1	20	B	20	1000	D
6	11	D200	-	-	C	-	-	-	-	-	-	1000	D	1	20	C	-	1000	D
7	100	GARBAGE DISPOSAL	1	20	A	1	SPARE	1	20	A	1	12	12	1	20	A	1	12	12
8	-	SPARE	1	20	B	20	1	20	B	20	1	16	16	1	20	B	20	16	16

CALCULATED FAULT CURRENT:
FAULT CURRENT RATING: 4000 A
VOLTAGE: 120/208/240V, 4 WIRE
TOTAL CONNECTED LOAD: 34 A
DEMAND LOAD: 34 A

© 2008 ROUGH-IN READY DIVISION OF DENIER ELECTRIC CO., INC. THIS DRAWING MAY NOT BE REPRODUCED WITHOUT CONSENT OF DENIER ELECTRIC CO., INC.

<p>TYPICAL BARRACKS PROJECT FOR ABC CONTRACTOR 1234 ROUGH-IN READY LANE ANY WERE, USA 98765</p>	<p>Scale: 1/4"=1'-0" Date: 07-26-07 Drawn By: JFC Checked By: JFC</p>	<p>Revisions: OWNER REVIEW 12/17/07 CONTRACTOR CHANGES 12/21/07 CONTRACTOR CHANGES 01/02/08 CONTRACTOR CHANGES 03/26/08 CONTRACTOR REVISIONS</p>	<p>Rough-in Ready DENIER MANUFACTURING 35001 State Road Houston, Ohio 43030 www.roughinready.com (601) 266-8801</p>
--	--	---	---